

CAST EMT3500-1 EGI Flight Line Tester

Reduce EGI RTOK Rates on the Flight Line

Tightly coupled navigation systems such as the Embedded GPS/INS (EGI) integrate dual sensor solutions complicating troubleshooting. A lack of field support equipment makes software upgrades challenging. Some OFP loaders require the removal of the EGI from the aircraft.

The CAST EMT3500-1 diagnostic tool identifies failures on the flight line without the need to remove the EGI from the aircraft.

The EMT3500-1 is user-friendly field equipment that is easy for flight line personnel to operate. Its graphical interface minimizes key strokes while CDNU-like inputs and readouts significantly reduce the learning curve.



Key Features

- Lightweight & Portable
- OFP Load and Verify
- Reprogram GEM
- Almanac Functions
- BIT Read and Initiation
- Data Reporting



System Advantages

- Loads EGI OFP, Updates GPS Software, Provides Status and Verifies Load.
- Downloads and Saves Current Almanac, Restores Almanac, Displays Almanac currently in EGI.
- Requests Periodic BIT Status, Initiates BIT, Writes Current BIT to Display, Saves Current BIT to Disk, Clears BIT, Displays Saved BIT Results.
- Contains MIL-STD-1553 Interface for Primary Control and Communication with EGI.
- Contains RS-422 Interface for Providing Control and Interface with GEM.
- Provides Reports on BIT, OFP and Almanac Status.
- Equipped with Full Set of Custom Cabling for Aircraft Hookup.
- Toughbook enclosed. This means that in addition to being vibration, shock, and drop-resistant, they are also resistant to water, dust, and extreme temperatures.

System Specifications

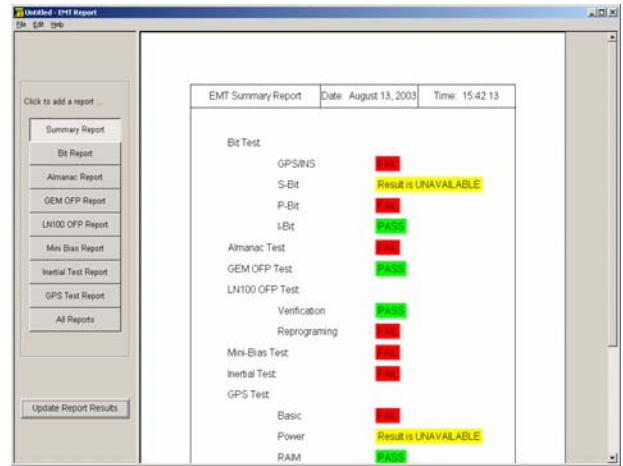
- Size (H x W x D) 2.8" x 11.9" x 11.3"
- Weight 8.4 lbs
- Power Required 110/220 VAC, 50/60 Hz
- OS Windows
- Battery 7 hours life (5 hour charge time)

Hardware Description

- Portable, Fully Rugged Toughbook Case
- Pointing Device and 13.3" Color Monitor
- USB, CD RW, Floppy Drive
- Appropriate Cabling for Aircraft Hookup

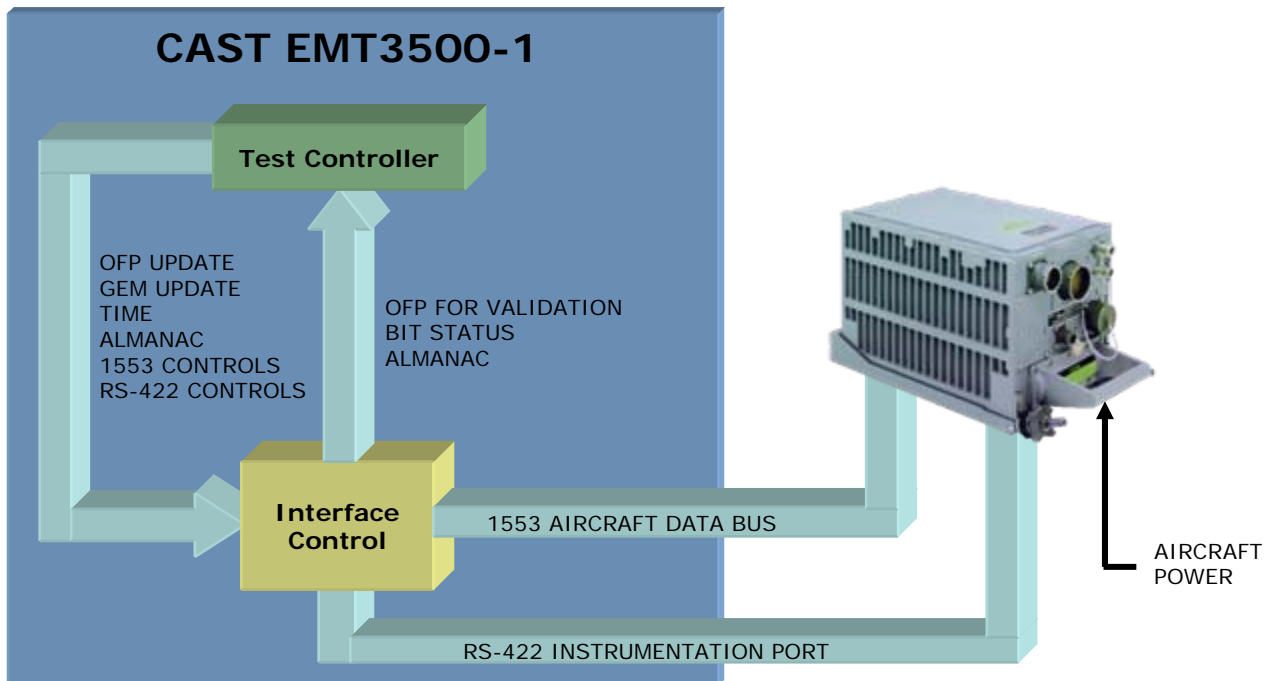
System Options

- Inertial Mini-Bias Support



The CAST EMT3500-1 EGI Diagnostics Report

EGI Diagnostic Flight Line System



The EMT3500-1 loads and verifies OFF and GEM software via 1553 and extracts receiver data via RS-422.